



# PRICE PUMP®

## XL100/150/200

### PUMP VOLUTE / IMPELLER MATERIALS

XL (SS) – 316SS / 316SS

### APPLICATIONS

- WASTE WATER TREATMENT
- HOT SOLVENTS
- DEIONIZED WATER
- CHEMICAL PROCESS
- PLATING EQUIPMENT
- AGRICULTURAL CHEMICALS

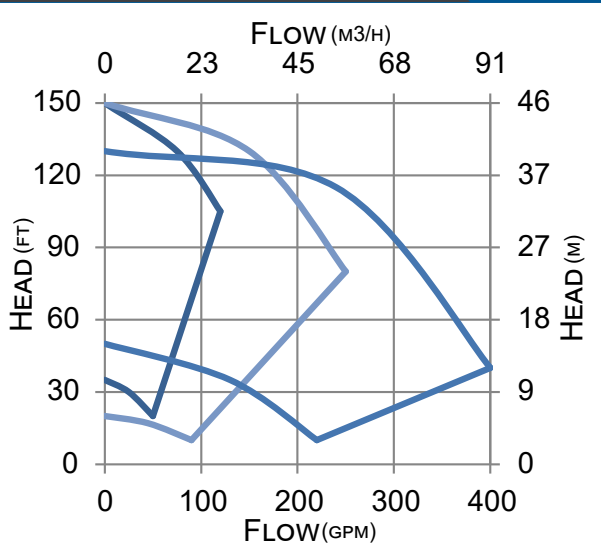


### STANDARD SPECIFICATIONS

- XL100 / XL100V DISCHARGE 1", SUCTION 1-1/2" ANSI FLANGES
- XL150 / XL150V DISCHARGE 1-1/2", SUCTION 3" ANSI FLANGES
- XL200 / XL200V DISCHARGE 2", SUCTION 3" ANSI FLANGES
- FLANGES: 150 LB. CENTERLINE ANSI DIMENSIONED
- MAXIMUM IMPELLER DIAMETER: 5.98"
- SHAFT SLEEVE: 316SS
- MOTOR: NEMA JM FACE (MULTIPLE ENCLOSURES AVAILABLE)
- PUMP ENERGY INDEX: .883-.948

### MECHANICAL SEAL TYPES

- SINGLE, 1-1/2" TYPE 21 BUNA, CARBON VS. CERAMIC (AI, BF, SF, AB)
- SINGLE, 1-1/2" TYPE 21 VITON, CARBON VS. CERAMIC (SS)
- NOTE: ADDITIONAL SEAL OPTIONS AVAILABLE
- BRACKET MATERIAL: STAINLESS STEEL, BRONZE, & CAST IRON
- GASKET: SYN. FIBER (AI, BF, AB, SF) AND PTFE (SS)

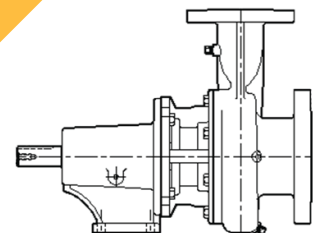


### FEATURES

- PUMP DESIGN – COMPACT, CLOSE COUPLED
- DOUBLE SEAL – TYPE 9 & 21 AVAILABLE
- HIGH PRESSURE OPTION – 300 PSI MAXIMUM
- TEFLON SEAL – TYPE 9 AVAILABLE
- FLUSH OPTIONS – RECIRCULATING & QUENCH AVAILABLE

### OPTIONAL CONFIGURATIONS

- AIR MOTOR: UP TO 5 HP
- VERTICAL MOUNTING
- POWER FRAME MOUNTING
- LONG-COUPLED MOUNTING



2203 SMEED PARKWAY CALDWELL, ID 83605

MAIN (208) 402-6871

TOLL FREE (800) 345-7867

EMAIL SALES@PRICEPUMP.COM

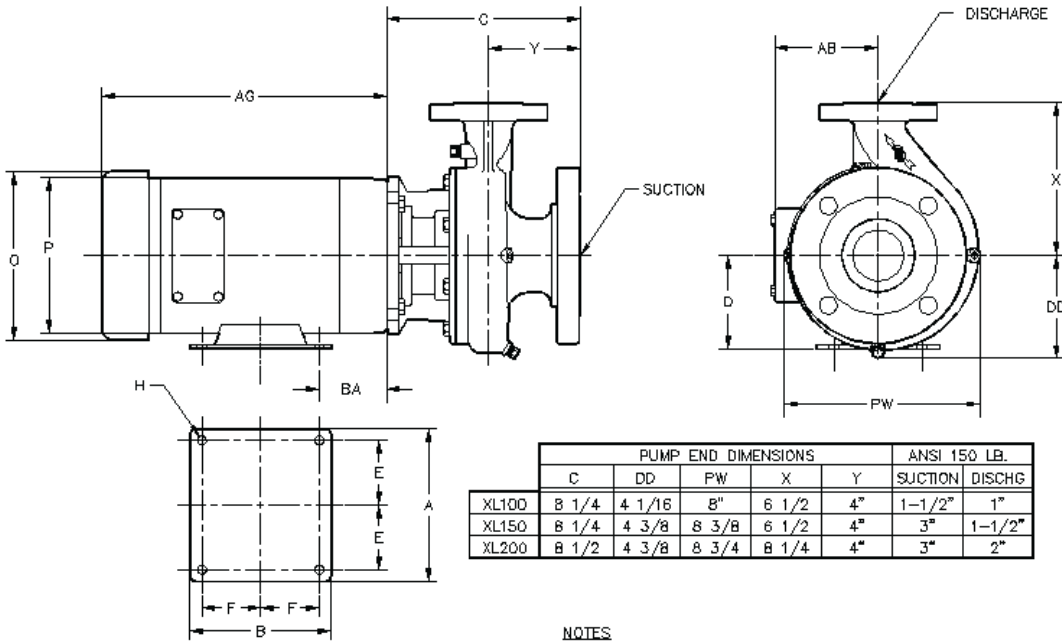
PRICEPUMP.COM





# PRICE PUMP

## XL100/150/200



	PUMP END DIMENSIONS					ANSI 150 LB.	
	C	DD	PW	X	Y	SUCTION	DISCHG
XL100	8 1/4	4 1/16	8"	6 1/2	4"	1-1/2"	1"
XL150	8 1/4	4 3/8	8 3/8	6 1/2	4"	3"	1-1/2"
XL200	8 1/2	4 3/8	8 3/4	8 1/4	4"	3"	2"

NOTES  
ALL DIMENSIONS ARE ROUNDED TO THE NEAREST 1/8 INCH.

HP	RPM	FRM	JM MOTOR END DIMENSIONS							ODP		TEFC & EXP. PRF						
			A	B	D	E	F	H	BA	D	P	AB	AC	AB	AG			
1 1/2	3600	143JM					2											
2	3600	145JM	6-1/2	5-15/16	3-1/2	2-3/4	2-1/2	11/32	2-7/8	6-7/8	6-5/8	5-1/4	8-3/4	6-3/4	11-1/4			
3	3600	145JM					2-1/4											
5	3600	182JM	8-1/2	6-1/2	4-1/2	3-3/4	2-1/4	13/32	3-1/2	8-7/16	7-7/8	5-7/8	11-1/8	7-3/8	14-3/4			
7 1/2	3600	184JM					2-3/4											
10	3600	215JM	9-1/2	8	5-1/4	4-1/4	3-1/2	13/32	4-1/2	10-1/16	9-9/16	N/A	7-3/8	14-3/4				
15	3600	215JM																

NOTE: MOTOR DIMENSIONS WILL VARY BY MODEL AND MAKE. DIMENSIONS ARE TO BE USED FOR REFERENCE ONLY.  
10 AND 15 HP MOTORS ARE BALDOR 215 JM W/ 184 FACE.

## DIMENSIONS

MATERIALS OF CONSTRUCTION	
XL	SS
VOLUTE	316SS
IMPELLER	316SS
BRACKET	316SS
GASKET	TEFLON
FASTENERS	316 SS

\*TEMPERATURE LIMITS ARE BASED ON STANDARD SEAL AND GASKET MATERIALS, AND WILL VARY ACCORDING TO THE LIQUID BEING PUMPED

TECHNICAL INFORMATION		
MAX FLOW	(XL100)	120 GPM (27 M3/HR)
MAX FLOW	(XL150)	250 GPM (57 M3/HR)
MAX FLOW	(XL200)	400 GPM (95 M3/HR)
MAX HEAD		150 FEET (46 M)
MIN. FLOW	(XL100)	10 GPM (2.3 M3/HR)
MIN. FLOW	(XL150)	35 GPM (7.9 M3/HR)
MIN. FLOW	(XL200)	50 GPM (11.4 M3/HR)
MAX SOLID SIZE	(XL100)	0.120" (3.0 MM)
MAX SOLID SIZE	(XL150)	0.190" (4.8 MM)
MAX SOLID SIZE	(XL200)	0.250" (6.4 MM)
MAX WORKING PRESSURE	(TYPE 8 SEAL)	325 PSI (22.4 BAR)
	(TYPE 9 SEAL)	350 PSI (24.1 BAR)
	(TYPE 21 SEAL)	150 PSI (10.3 BAR)
	(TYPE 2 SEAL)	300 PSI (20.6 BAR)
MAX TEMP.		300°F (149°C)*



2203 SMEED PARKWAY CALDWELL, ID 83605

MAIN  
(208) 402-6871

TOLL FREE  
(800) 345-7867

EMAIL  
SALES@PRICEPUMP.COM

PRICEPUMP.COM

